

GRADUATION
REHEARSAL

MAY 29TH, 2026

WELCOME
CLASS OF 2026



**PURSUE
YOUR
PASSION**

OUTLINE

- **Getting to the Grey Eagle**
 - **Parking**
 - Arrival Times
 - Guest & Accessibility Seating
- **What to Wear**
- **Cell Phone Policy**
- **Emergency Exits**
- **Grad Ceremony - Processional, Crossing the Stage, Recessional**
- **Banquet Information**
- **Gown Pick-Up**

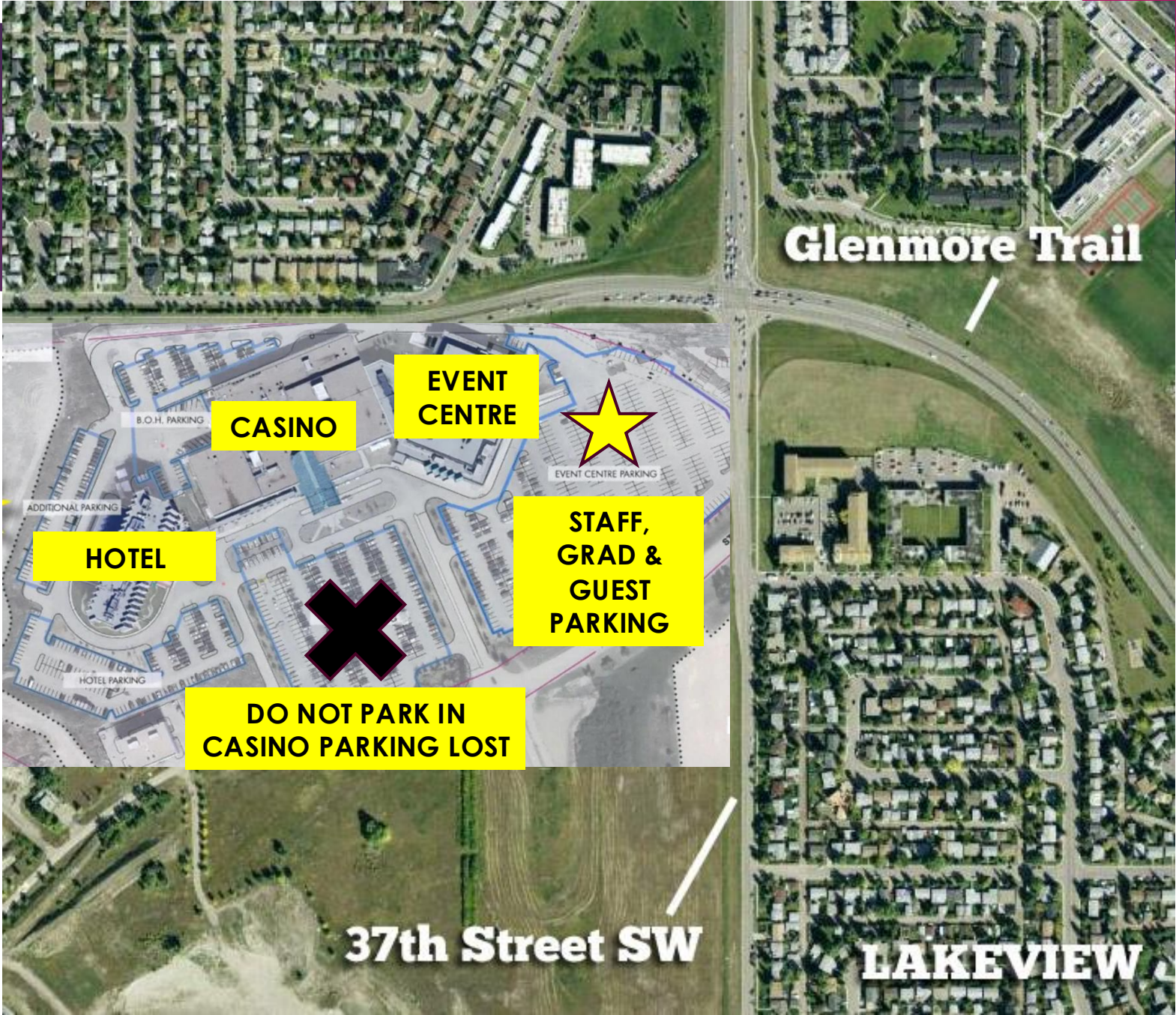


Getting to
the...



3777 GREY EAGLE DR, CALGARY, AB T3E 3X8

**PLEASE PARK
IN EVENT
CENTRE
PARKING
(EAST SIDE)**



IMPORTANT GRADUATION PARKING NOTICE

Grey Eagle Resort & Casino



Grey Eagle Resort & Casino is looking forward to welcoming graduates, families, teachers, and school communities for this year's graduation ceremonies. **To help ensure the day runs smoothly, please read this important parking information carefully and plan ahead.**

WHAT YOU NEED TO KNOW



PARKING IS VERY LIMITED

During graduation ceremonies, parking at Grey Eagle Resort & Casino will be extremely limited.



CONSTRUCTION & AREA CLOSURES

Construction and scheduled area closures mean some parking areas will be fully inaccessible.



CARPPOOLING IS CRITICAL

Please carpool whenever possible. This is the most important step families can take.



CONSIDER RIDESHARE

Taxis, Uber and other ride share options are highly recommended as an alternative option.



ARRIVE EARLY & ALLOW EXTRA TIME

Plan ahead. Allow extra time for traffic, parking, and walking to the venue.



CONSIDER BUSSING STUDENTS (IF FEASIBLE)

Schools may want to consider bussing students from their school to the venue. We understand this may not be possible for all.

TWO ACCESS ROUTES

- 1 Via Glenmore Trail**
Take Glenmore Trail to the Grey Eagle Drive exit, then follow Grey Eagle Drive and follow signs to the resort.
- 2 Via Stoney Trail**
Take Stoney Trail to the Tsuut'ina Parkway exit and follow signs to the resort.

HELP SPREAD THE WORD



Share this information with other parents & families



Post this on grad pages, newsletters & school websites



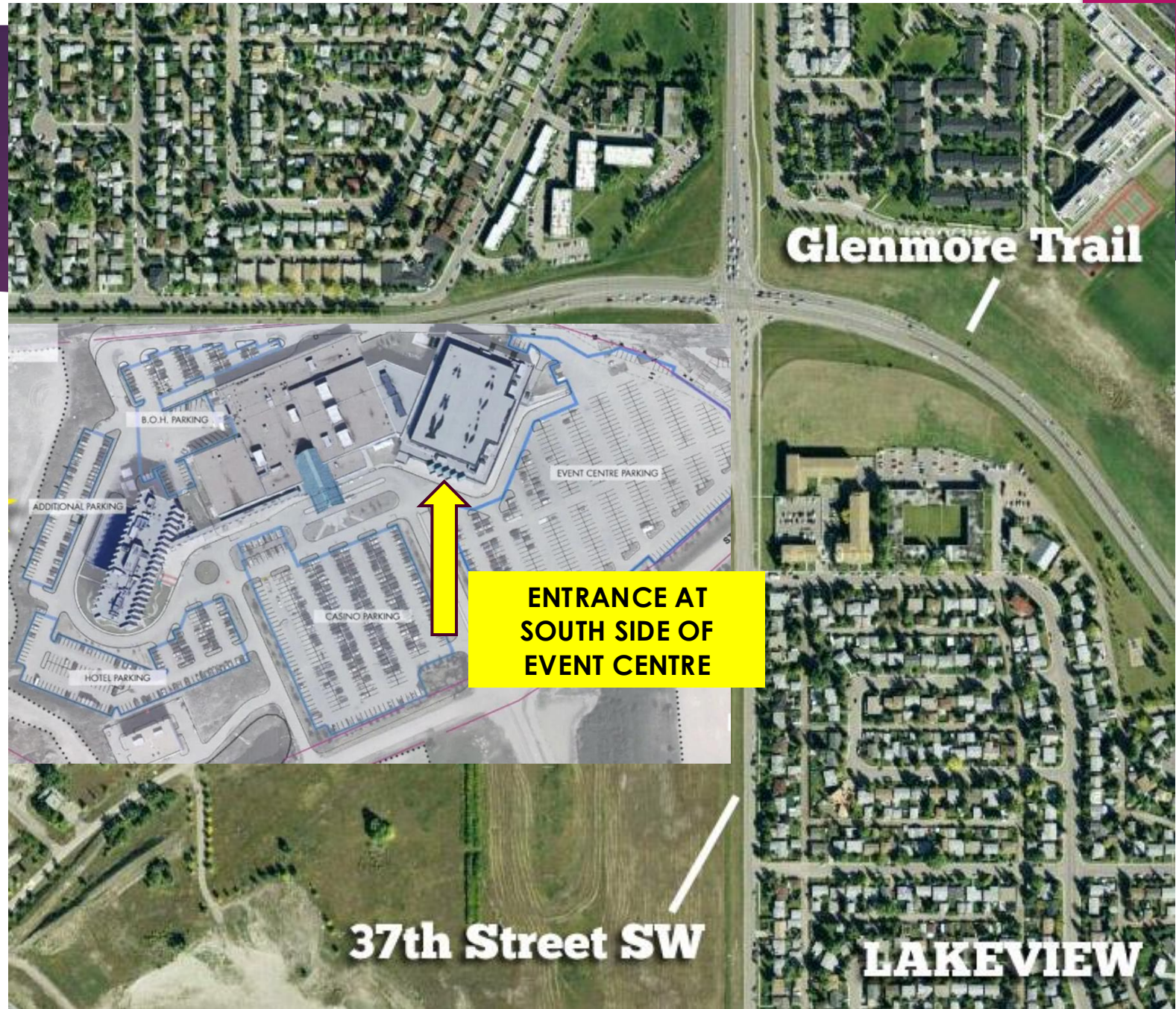
Share this on your social media channels

GREY EAGLE PARKING RESTRICTIONS

**MAIN
ENTRANCE
IS SOUTH
SIDE OF
EVENT
CENTRE**



**PLEASE
DROP OFF
ON EAST
SIDE OF
EVENT
CENTRE**





PLEASE DO NO DROP OFF
IN FRONT OF BOX OFFICE



PLEASE DO NOT DROP OFF
IN FRONT OF CASINO



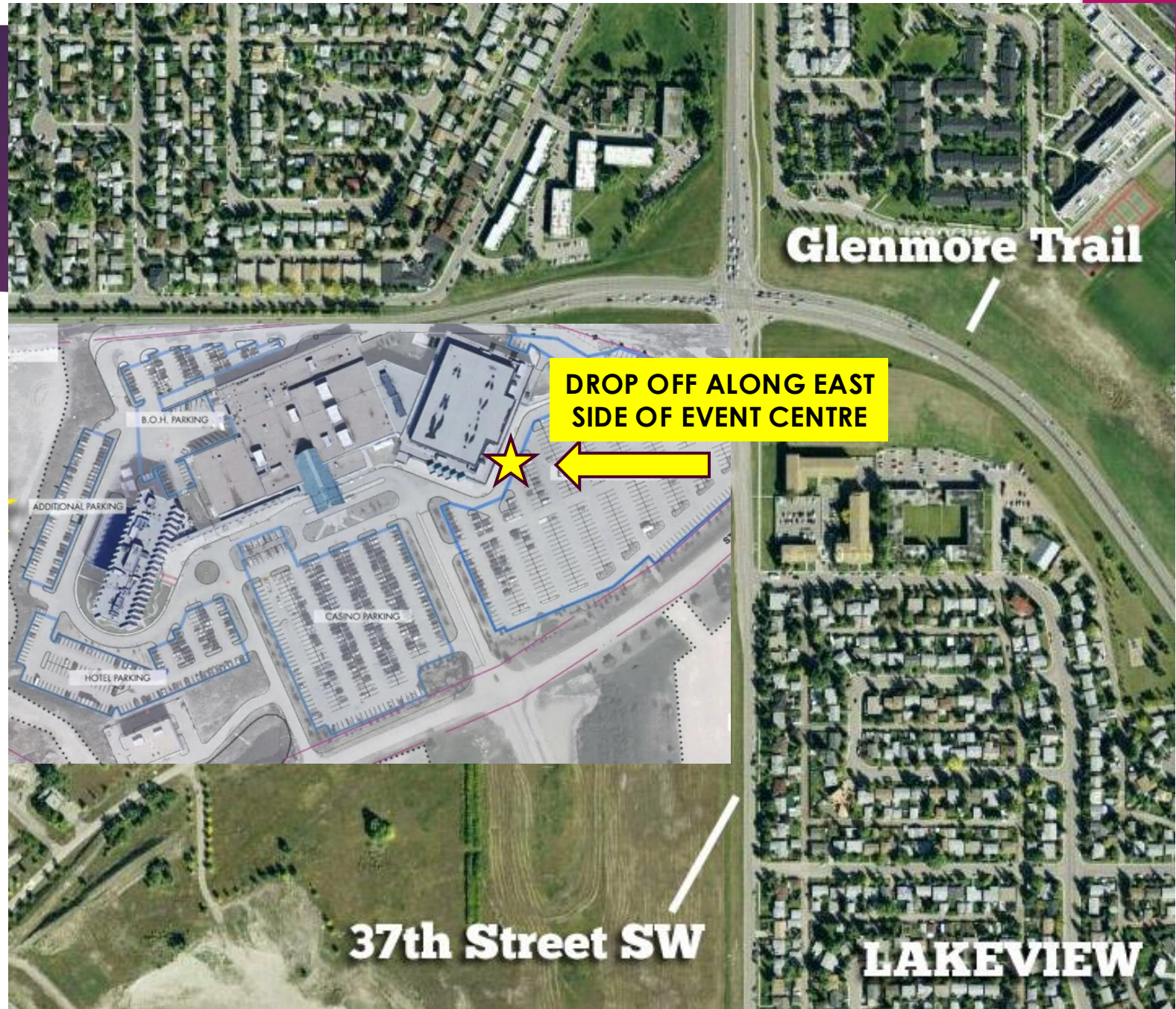
PLEASE DROP OFF ON EAST SIDE OF THE EVENT CENTRE

▶ THERE IS A
LARGE WIDE
SIDEWALK THAT
TAKES YOU RIGHT
TO THE FRONT
DOORS OF THE
EVENT CENTRE.

▶ LIMITED
MOBILITY &
WHEELCHAIR
ACCESSABLE



**PLEASE
DROP OFF
ON EAST
SIDE OF
EVENT
CENTRE**



OUTLINE

- **Getting to the Grey Eagle**
 - Parking
 - **Arrival Times**
 - Guest & Accessibility Seating
- What to Wear
- Cell Phone Policy
- Emergency Exits
- Grad Ceremony - Processional, Crossing the Stage, Recessional
- Banquet Information
- Gown Pick-Up



**ALL GRADUANDS
ENTER AT:**

8:00 am

MAIN FOYER

**GRADUANDS,
PLEASE PROCEED
TO LINE UP AREA**

**BEHIND A LARGE
BLACK CURTAIN**



OUTLINE

- **Getting to the Grey Eagle**
 - Parking
 - Arrival Time
 - **Guest & Accessibility Seating**
- What to Wear
- Cell Phone Policy
- Emergency Exits
- Grad Ceremony - Processional, Crossing the Stage, Recessional
- Banquet Information
- Gown Pick-Up

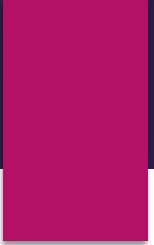
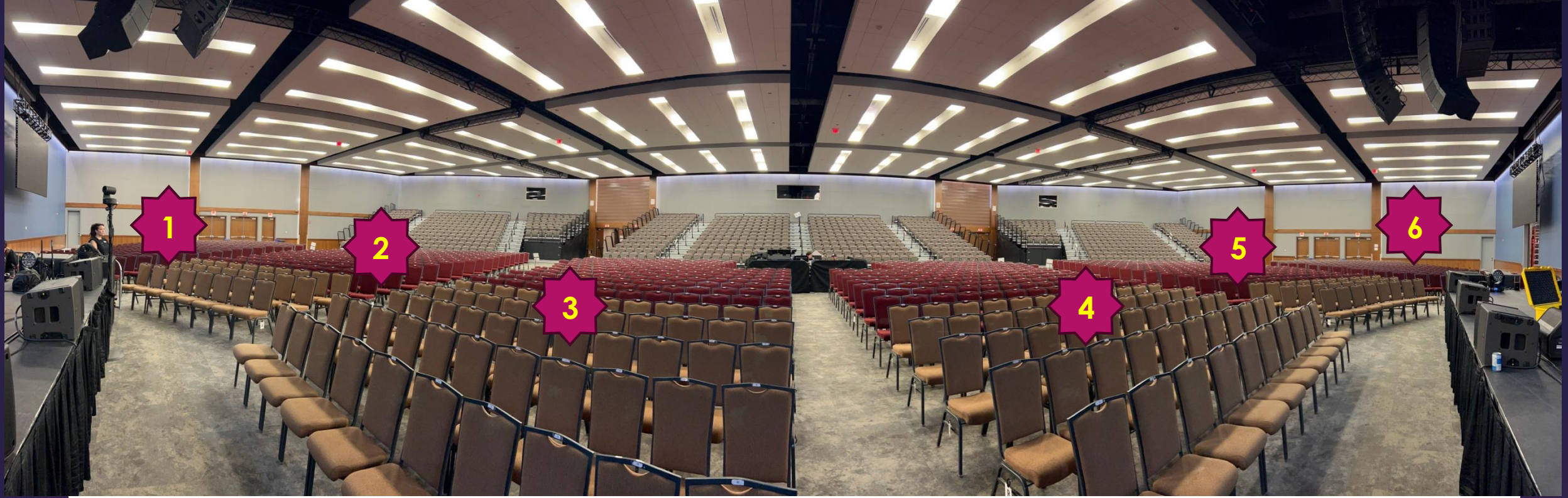


ALL GUESTS ENTER AT:

8:30am

**FAMILY & GUESTS
WILL START
LINING UP IN
MAIN FOYER AREA**





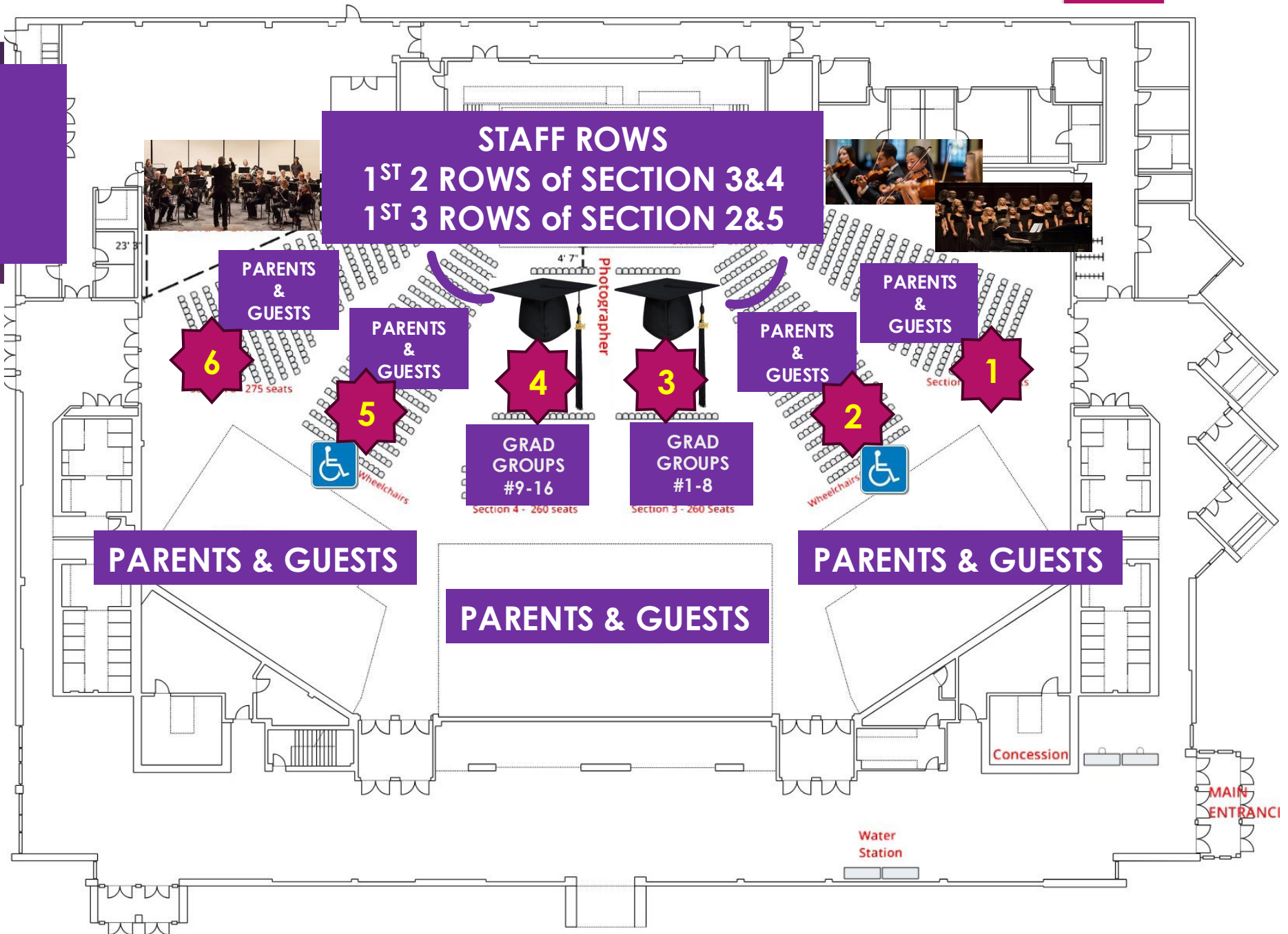
GUEST & ACCESSIBLE SEATING

GENERAL SEATING IS FIRST COME, FIRST CHOICE.

IF YOU HAVE REQUESTED ACCESSIBILITY SEATING, WHEN RESERVING YOUR TICKETS, PLEASE LOOK FOR STAFF HOLDING



STAFF WILL DIRECT GUEST TO ACCESSIBILITY SEATING (LAST 2 ROWS OF SECTIONS #2 & #5)
(ONLY 2 SEATS RESERVED)



STAFF ROWS
1ST 2 ROWS of SECTION 3&4
1ST 3 ROWS of SECTION 2&5

PARENTS & GUESTS

6

275 seats

PARENTS & GUESTS

5



Wheelchairs

PARENTS & GUESTS

GRAD GROUPS #9-16

Section 4 - 260 seats

PARENTS & GUESTS

3

GRAD GROUPS #1-8

Section 3 - 260 Seats

PARENTS & GUESTS

2



Wheelchairs

PARENTS & GUESTS

1

PARENTS & GUESTS

PARENTS & GUESTS

PARENTS & GUESTS

Concession

Water Station

MAIN ENTRANCE

OUTLINE

- ~~Getting to the Grey Eagle~~
 - ~~Parking~~
 - ~~Arrival Times~~
 - ~~Guest & Accessibility Seating~~
- **What to Wear**
- **Cell Phone Policy**
- **Emergency Exits**
- Grad Ceremony - Processional, Crossing the Stage, Recessional
- Banquet Information
- Gown Pick-Up



REMEMBER YOUR GOWN, OTHERWISE, YOU CANNOT PARTICIPATE



Remember

No cell phones or personal items in the processional.
Leave these items with family and friends.

Dress

IDEAS FOR CLOTHES:
Dress pants, shirt, blouse, tie, or dress.
Choose lighter items because gown can be rather warm.

Footwear

IDEAS FOR FOOTWEAR:
Dark dress shoes – recommended.
Flat shoes - recommended.

Don't

Don't spend too much time on your hair.
Remember you're wearing a cap.

Do

Do spend time practicing walking with heels (if this is your choice of footwear).
The concrete floor may be slippery; please be careful.



PRACTISE YOUR
WALK...

NO CELL PHONES

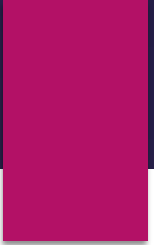
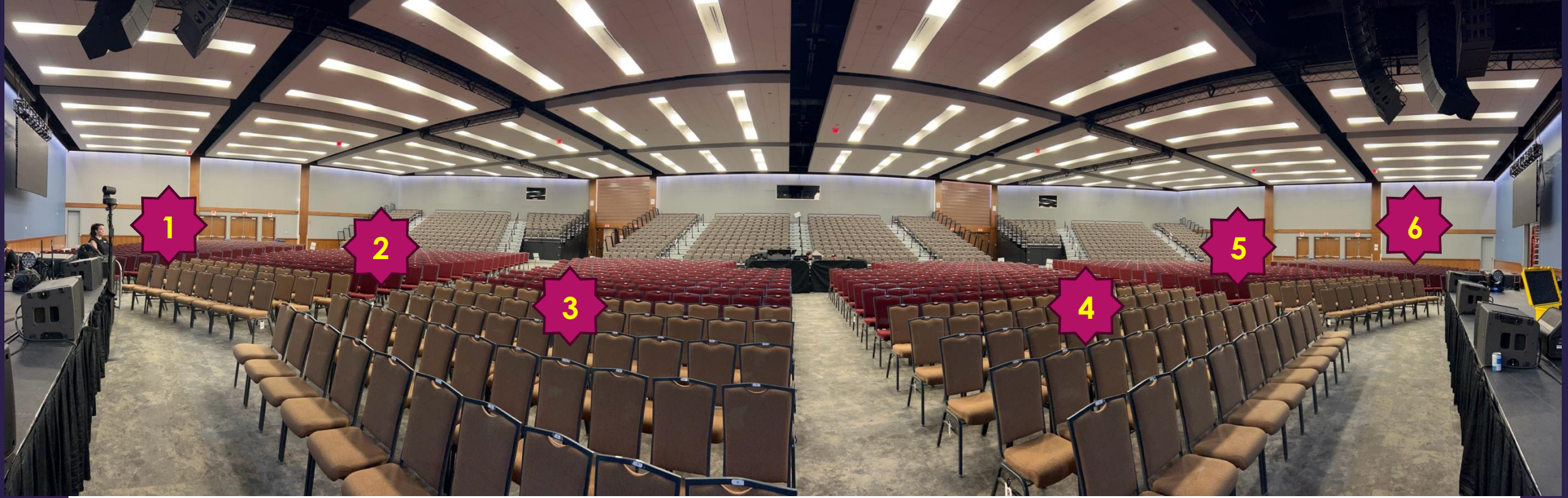
LEAVE YOUR PHONE & VALUABLES WITH FAMILY



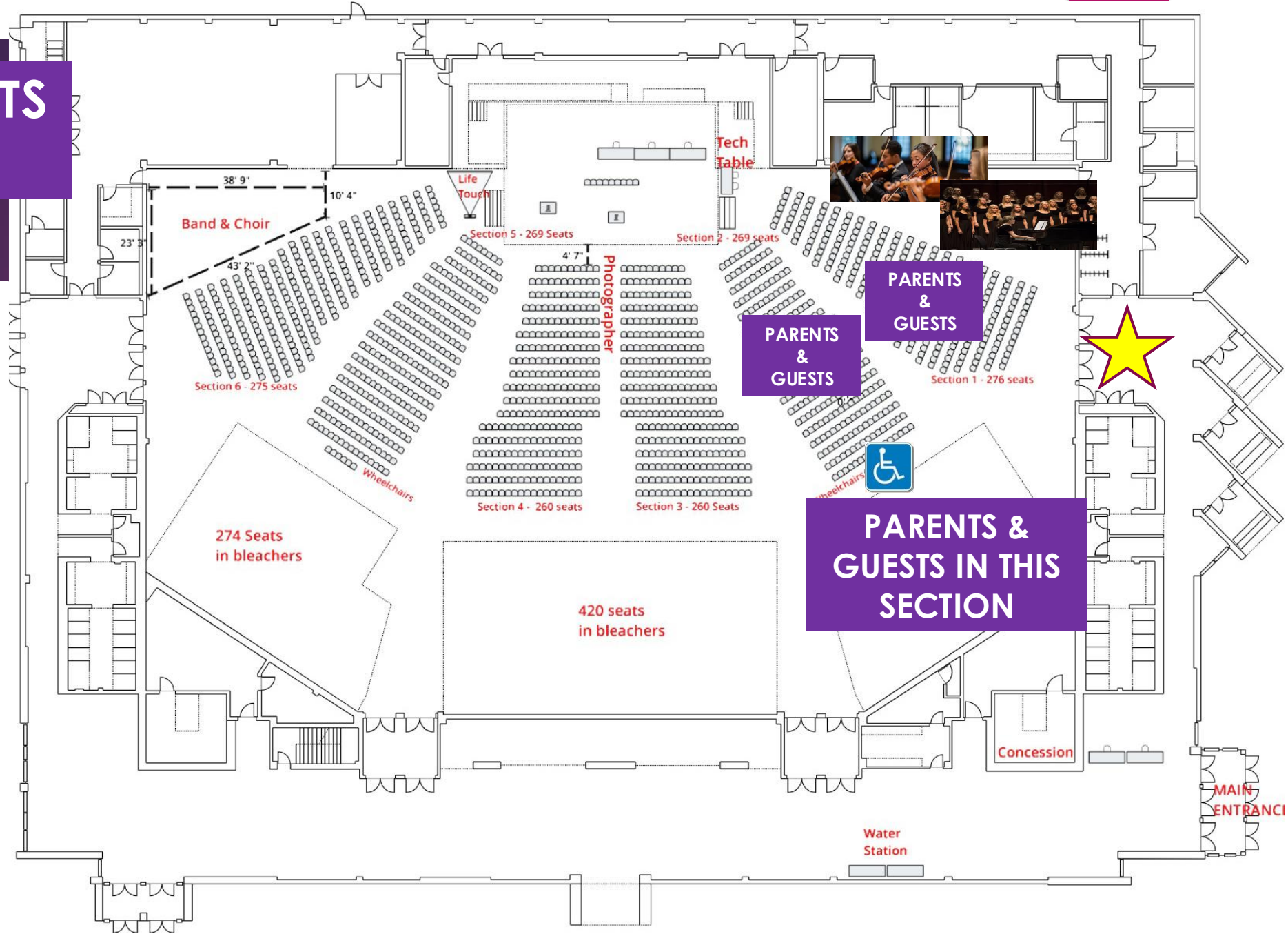
OUTLINE

- **Getting to the Grey Eagle**
 - ~~Parking~~
 - ~~Arrival Times~~
 - ~~Guest & Accessibility Seating~~
- ~~What to Wear~~
- ~~Cell Phone Policy~~
- **Emergency Exits**
- Grad Ceremony - Processional, Crossing the Stage, Recessional
- Banquet Information
- Gown Pick-Up





EMERGENCY EXITS SOUTH DOORS



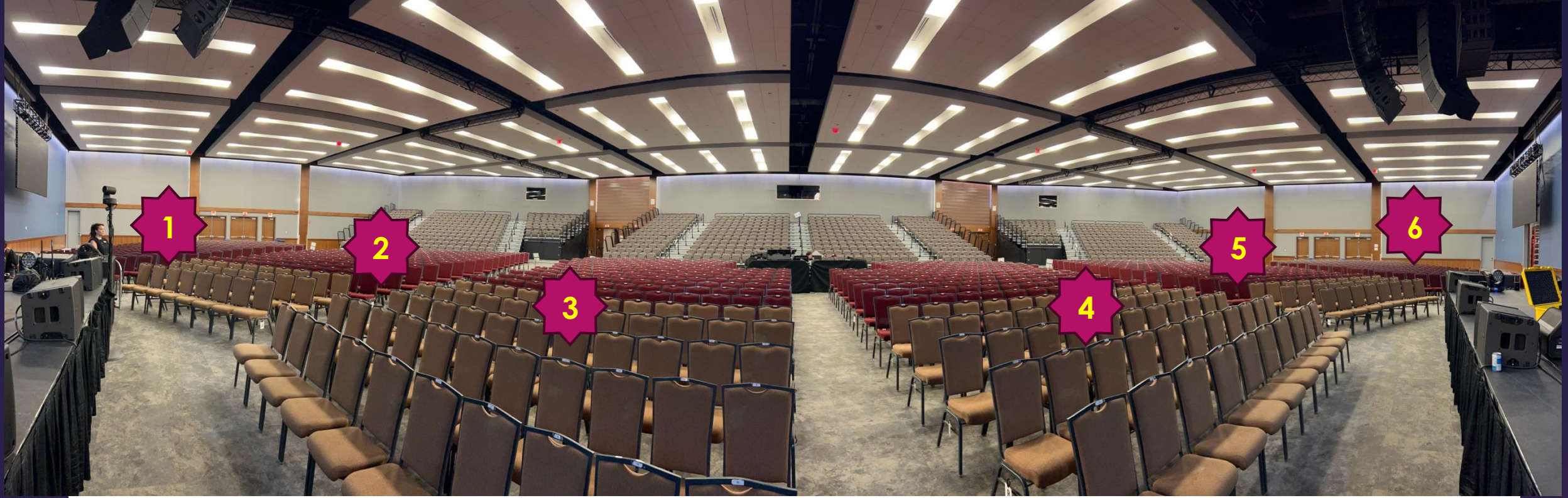
PARENTS & GUESTS

PARENTS & GUESTS

PARENTS & GUESTS IN THIS SECTION







1

2

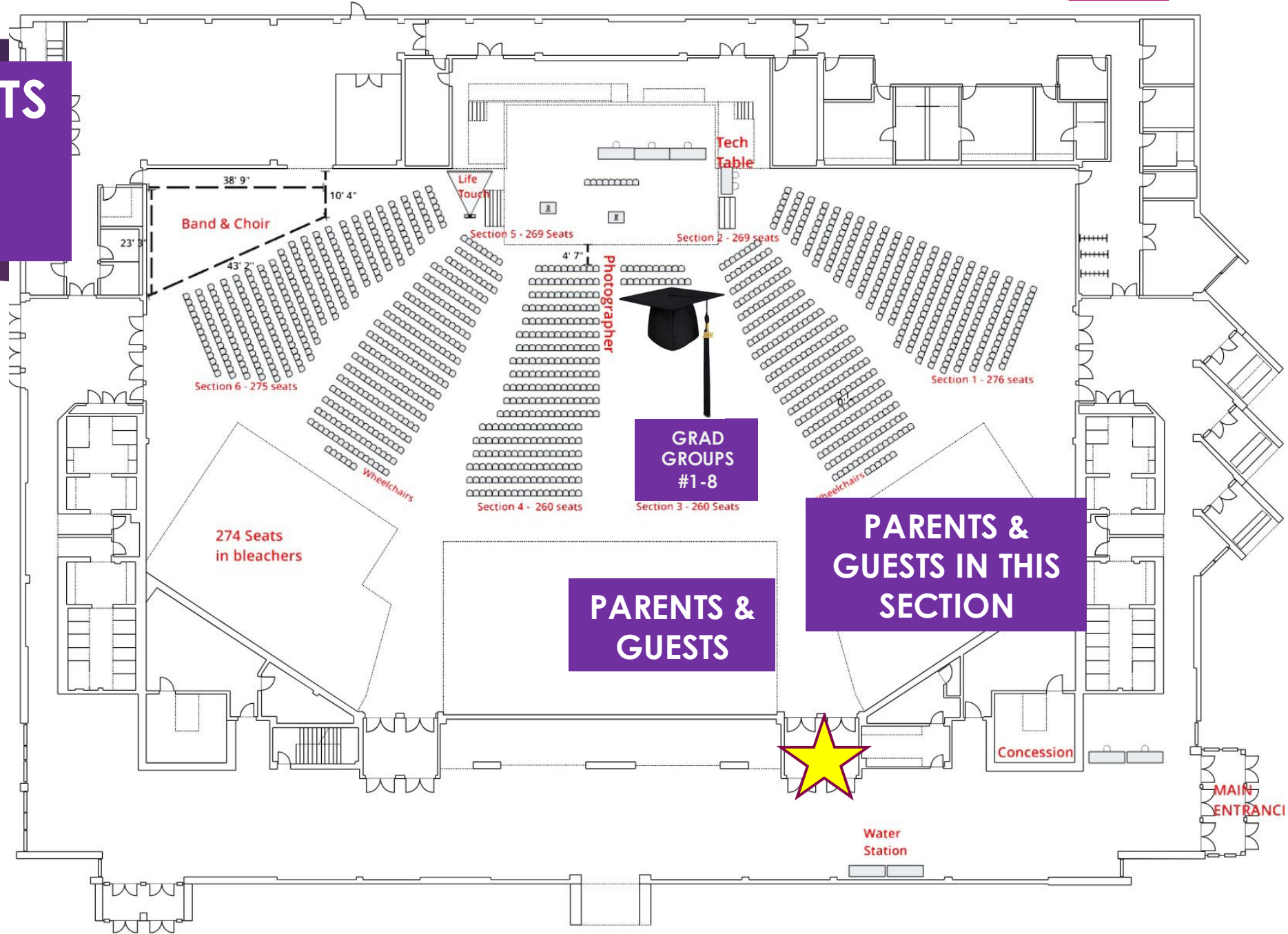
3

4

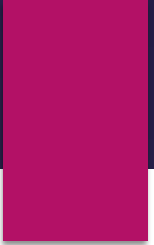
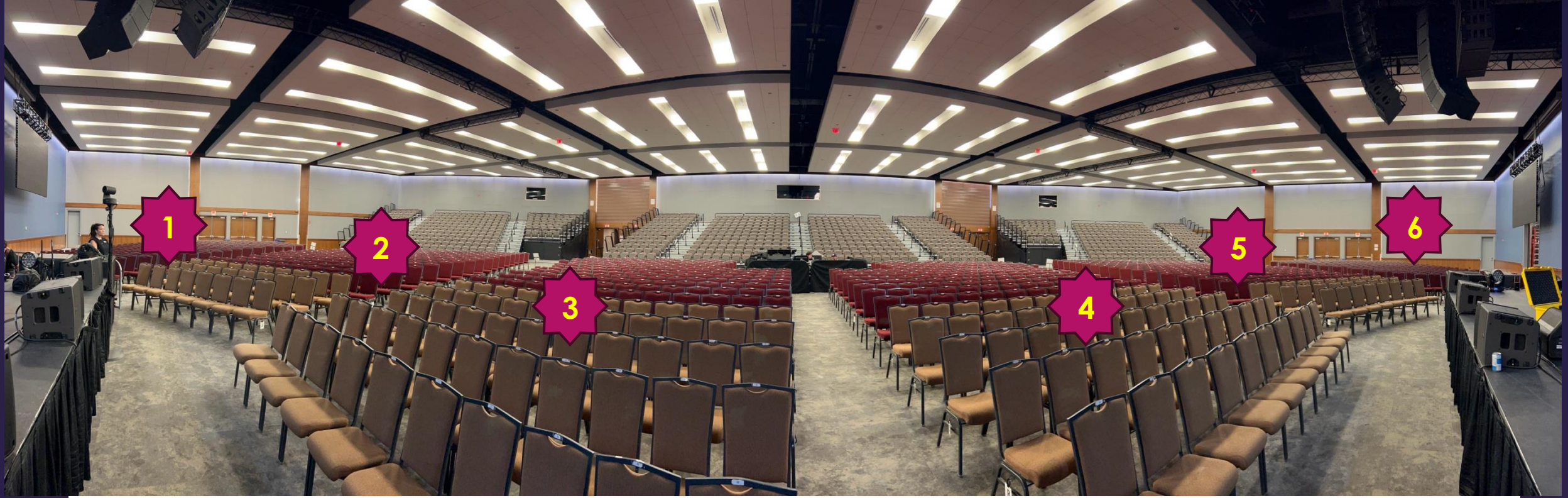
5

6

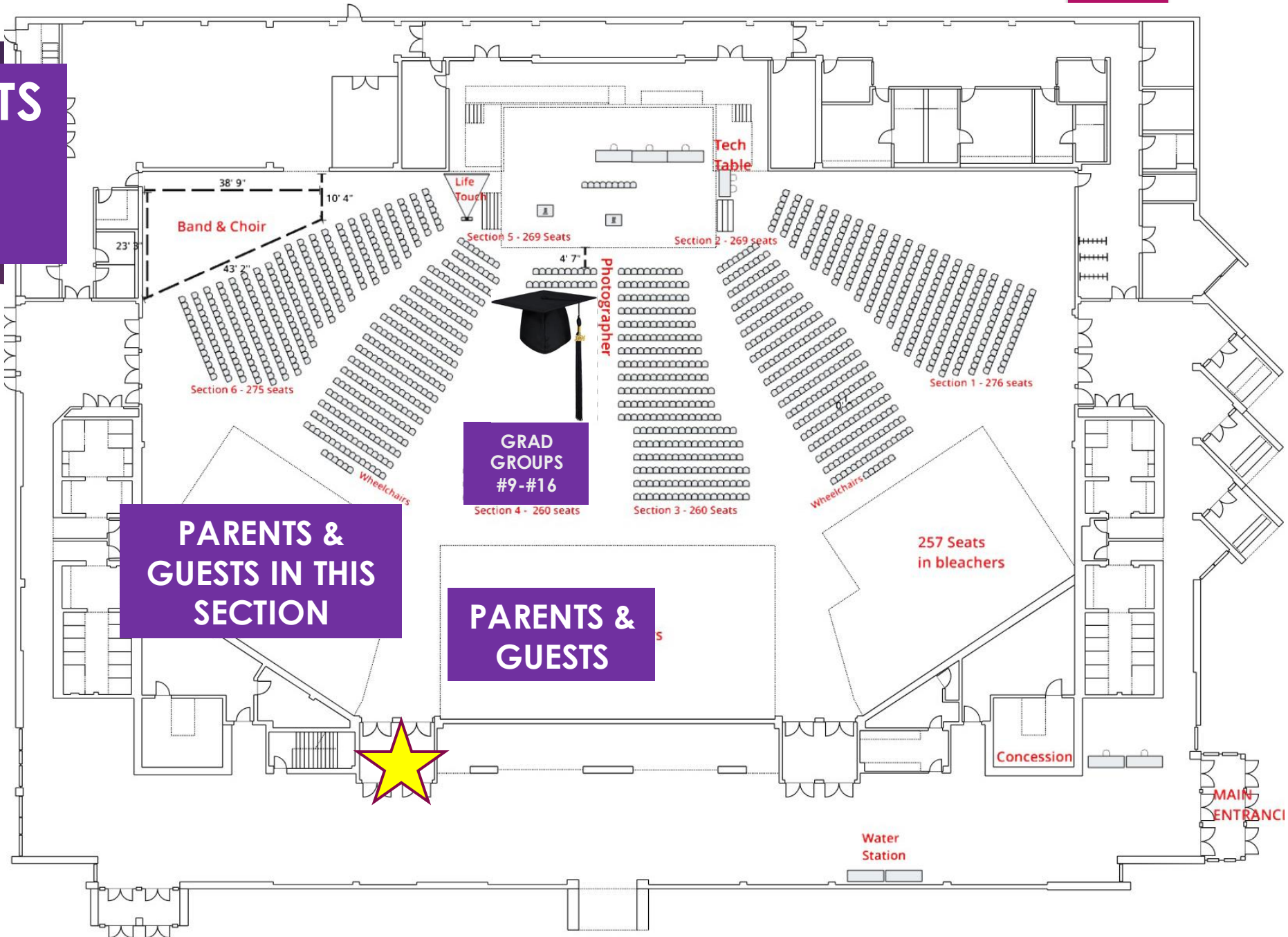
EMERGENCY EXITS SOUTHWEST DOORS







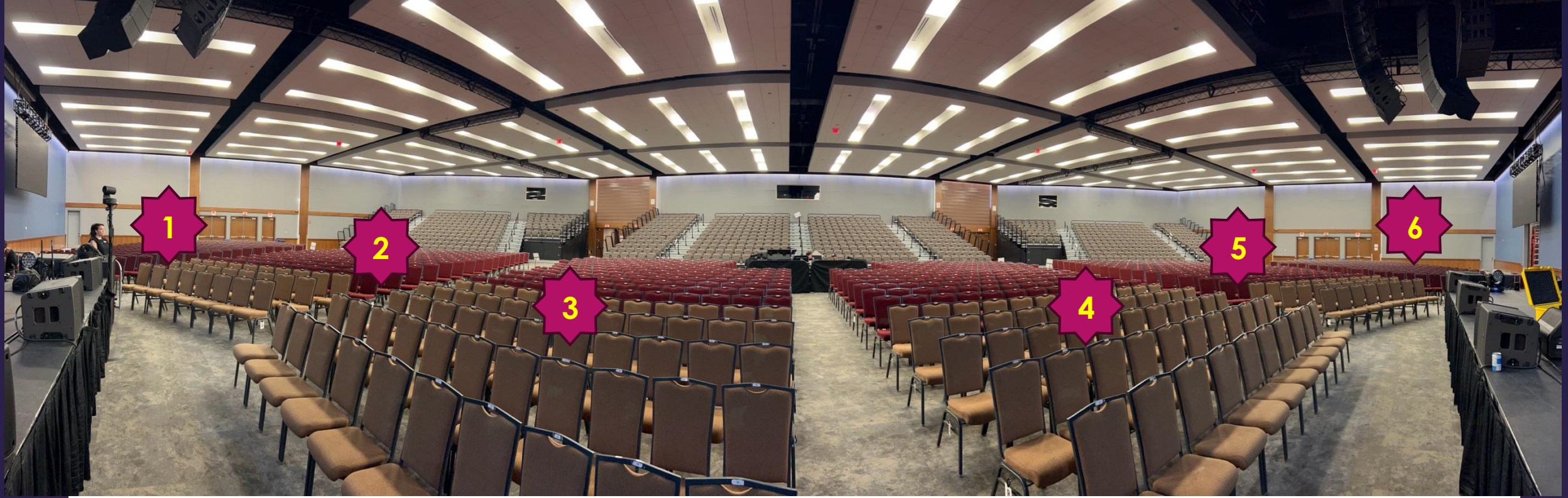
EMERGENCY EXITS SOUTH WEST DOORS



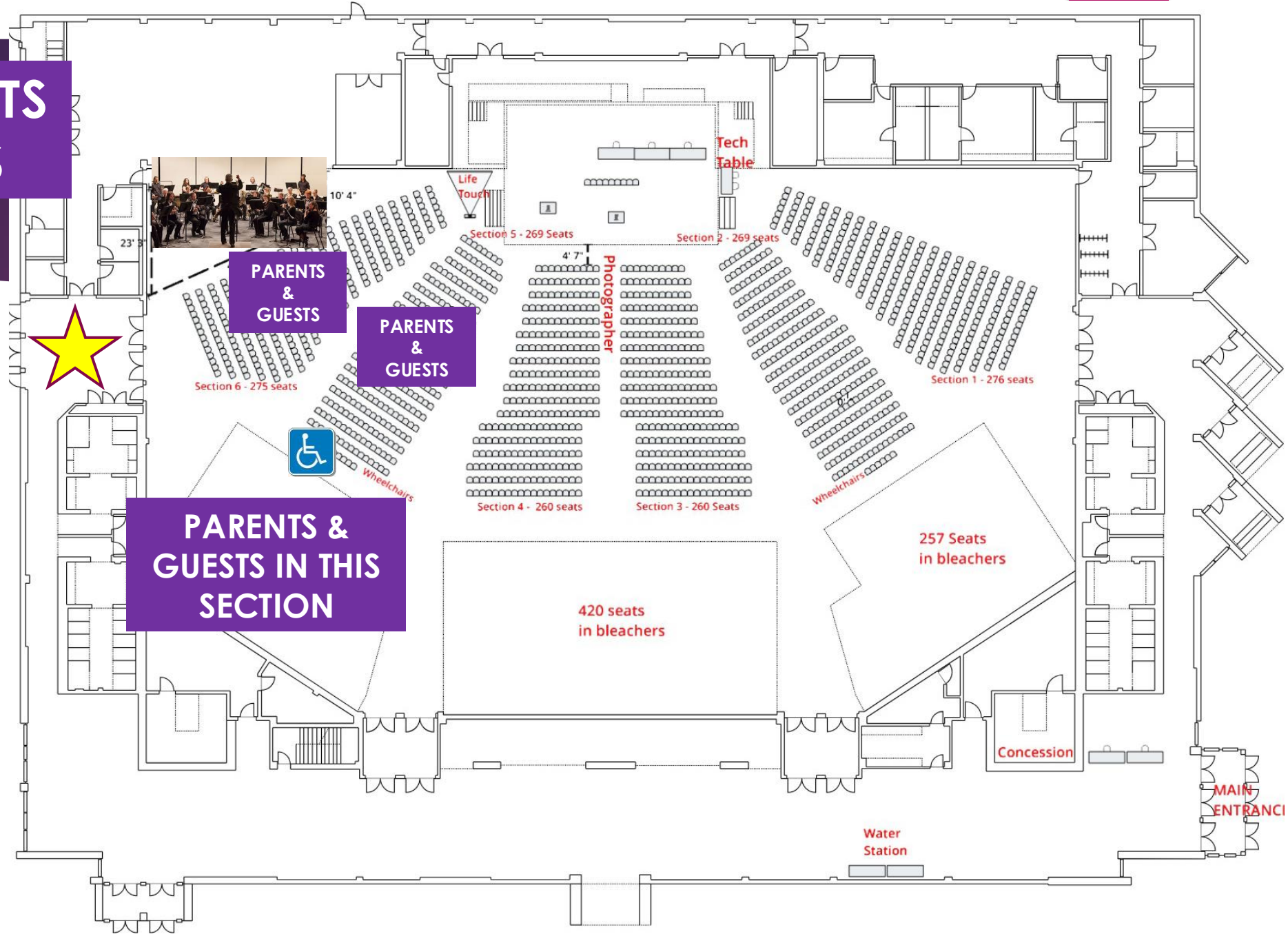
PARENTS & GUESTS IN THIS SECTION

PARENTS & GUESTS





EMERGENCY EXITS NORTH DOORS



**PARENTS &
GUESTS IN THIS
SECTION**

**PARENTS
&
GUESTS**

**PARENTS
&
GUESTS**



**MAIN
ENTRANCE**

Concession

**Water
Station**

**257 Seats
in bleachers**

**420 seats
in bleachers**

Section 4 - 260 seats

Section 3 - 260 Seats

Section 1 - 276 seats

Section 2 - 269 seats

Section 5 - 269 Seats

Section 6 - 275 seats



Wheelchairs

Wheelchairs



23' 8"

10' 4"

4' 7"

**Tech
Table**

**Life
Touch**



OUTLINE

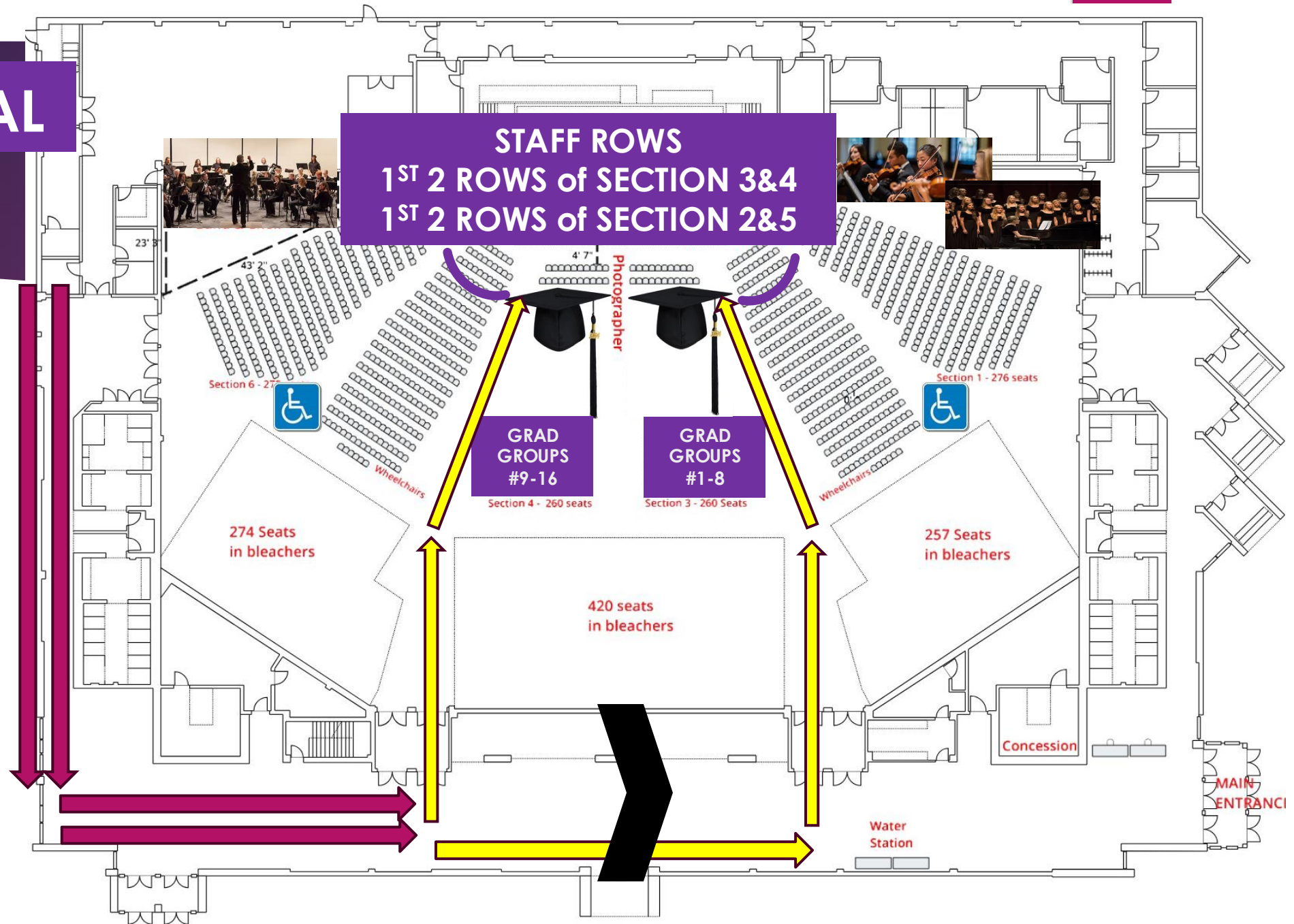
- ~~Getting to the Grey Eagle~~
 - ~~Parking~~
 - ~~Arrival Times~~
 - ~~Guest & Accessibility Seating~~
- ~~What to Wear~~
- ~~Cell Phone Policy~~
- ~~Emergency Exits~~
- **Grad Ceremony - Processional, Crossing the Stage, Recessional**
- Banquet Information
- Gown Pick-Up



PROCESSIONAL BEGINS

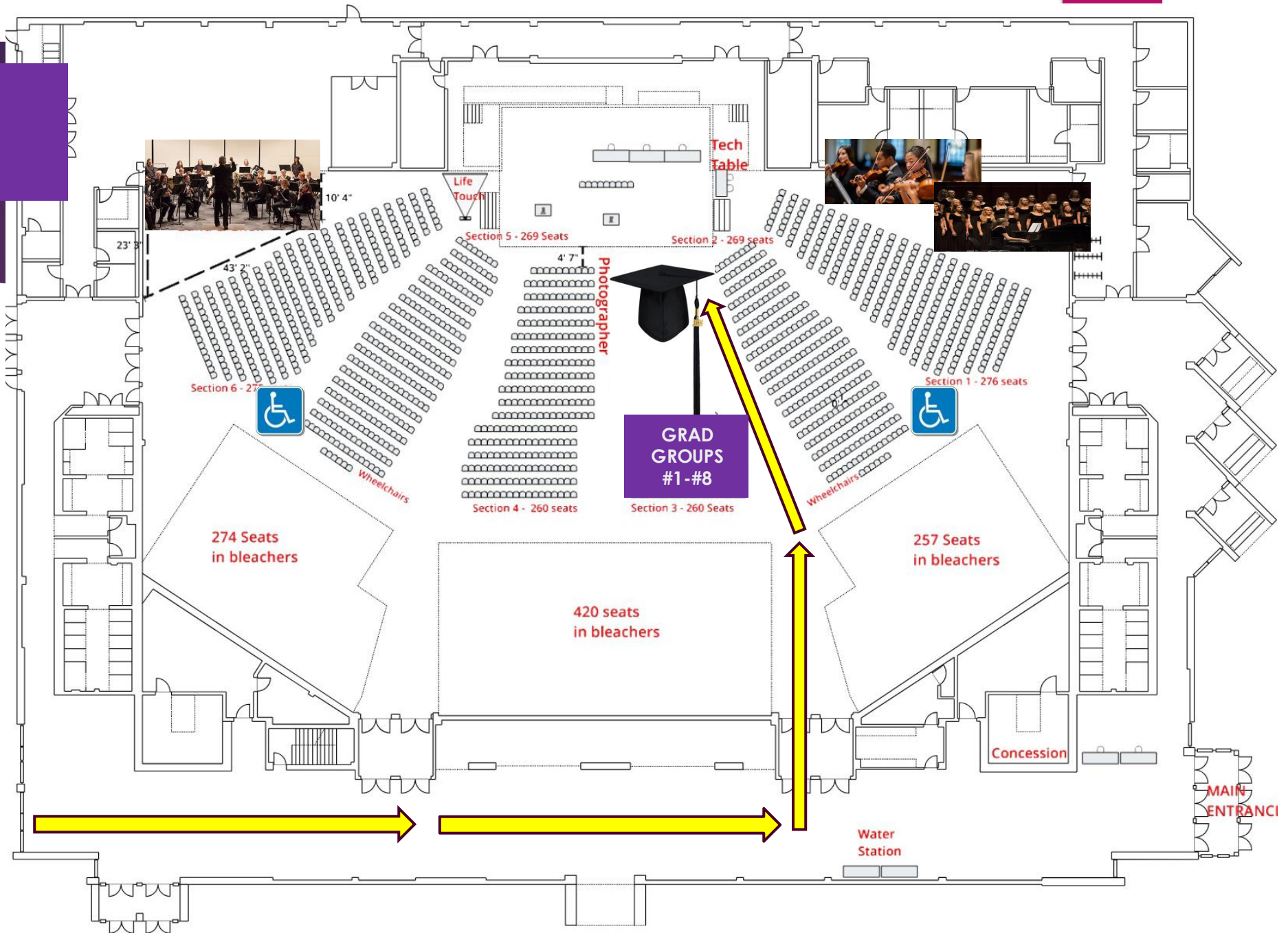
9:00 am

PROCESSIONAL

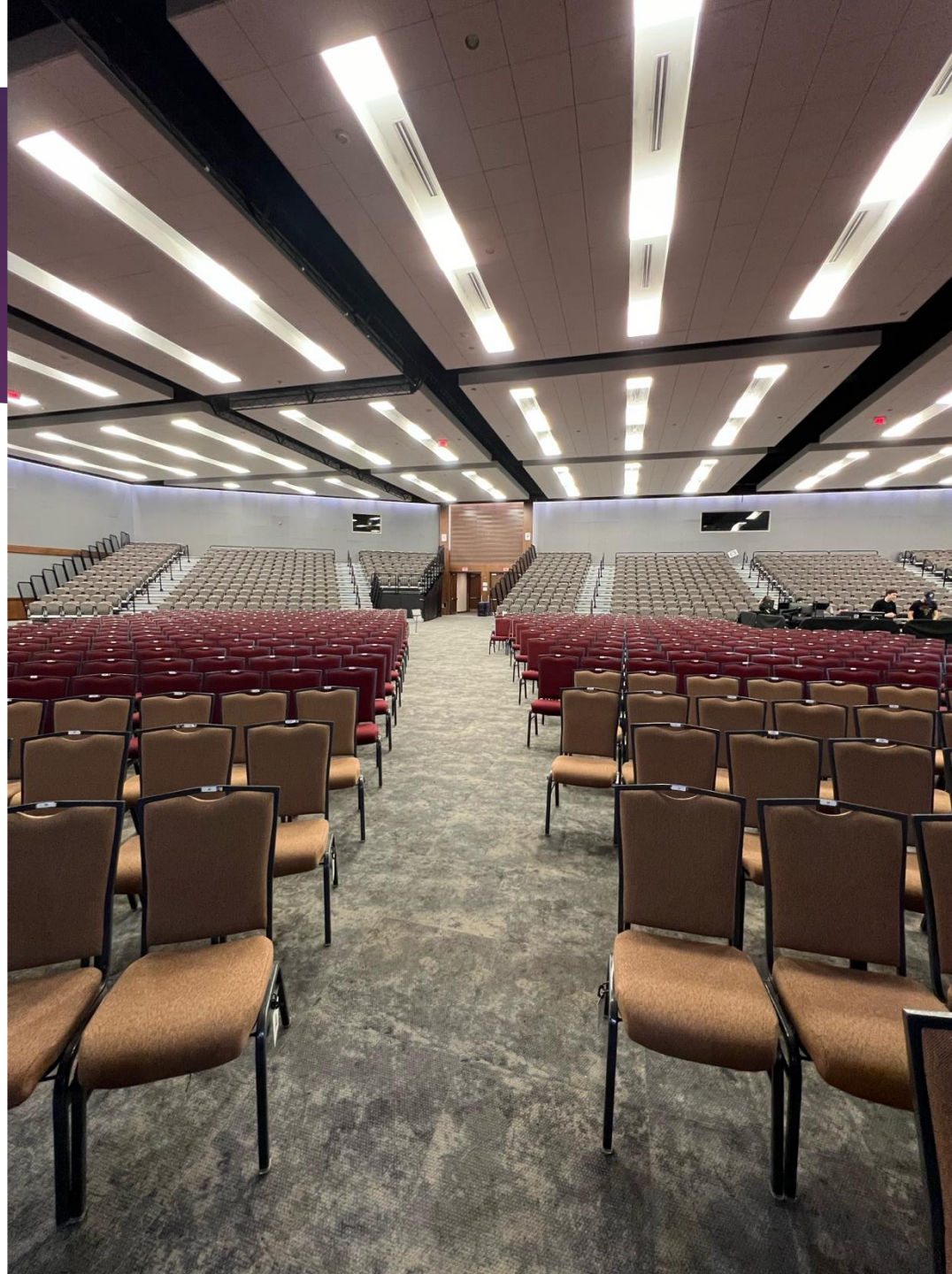


GRAD GROUP #1-#8

PROCESSIONAL



**GRAD GROUPS
#1-#8 ENTER
FROM THE
RIGHT SIDE OF
AUDITORIUM**

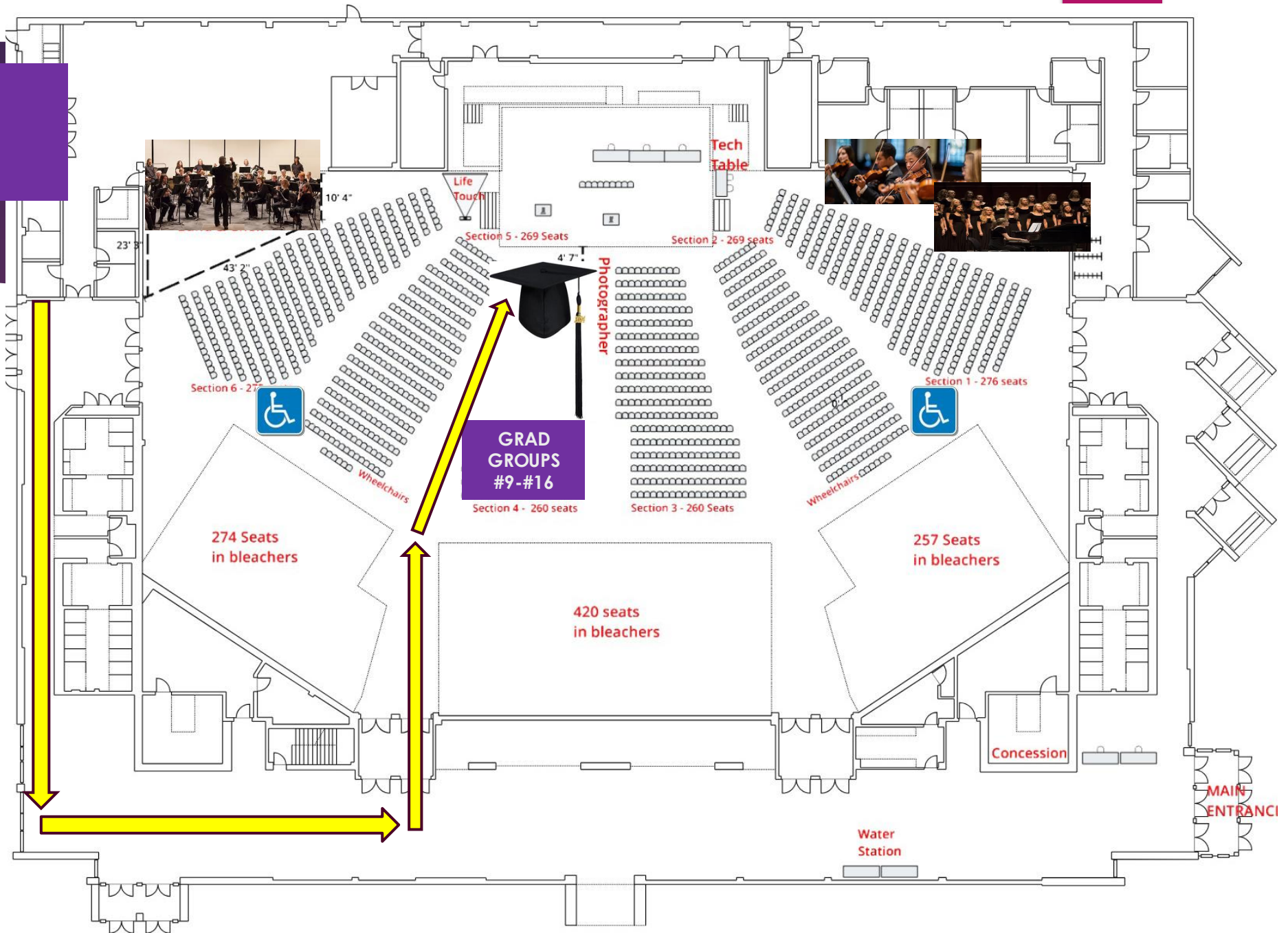




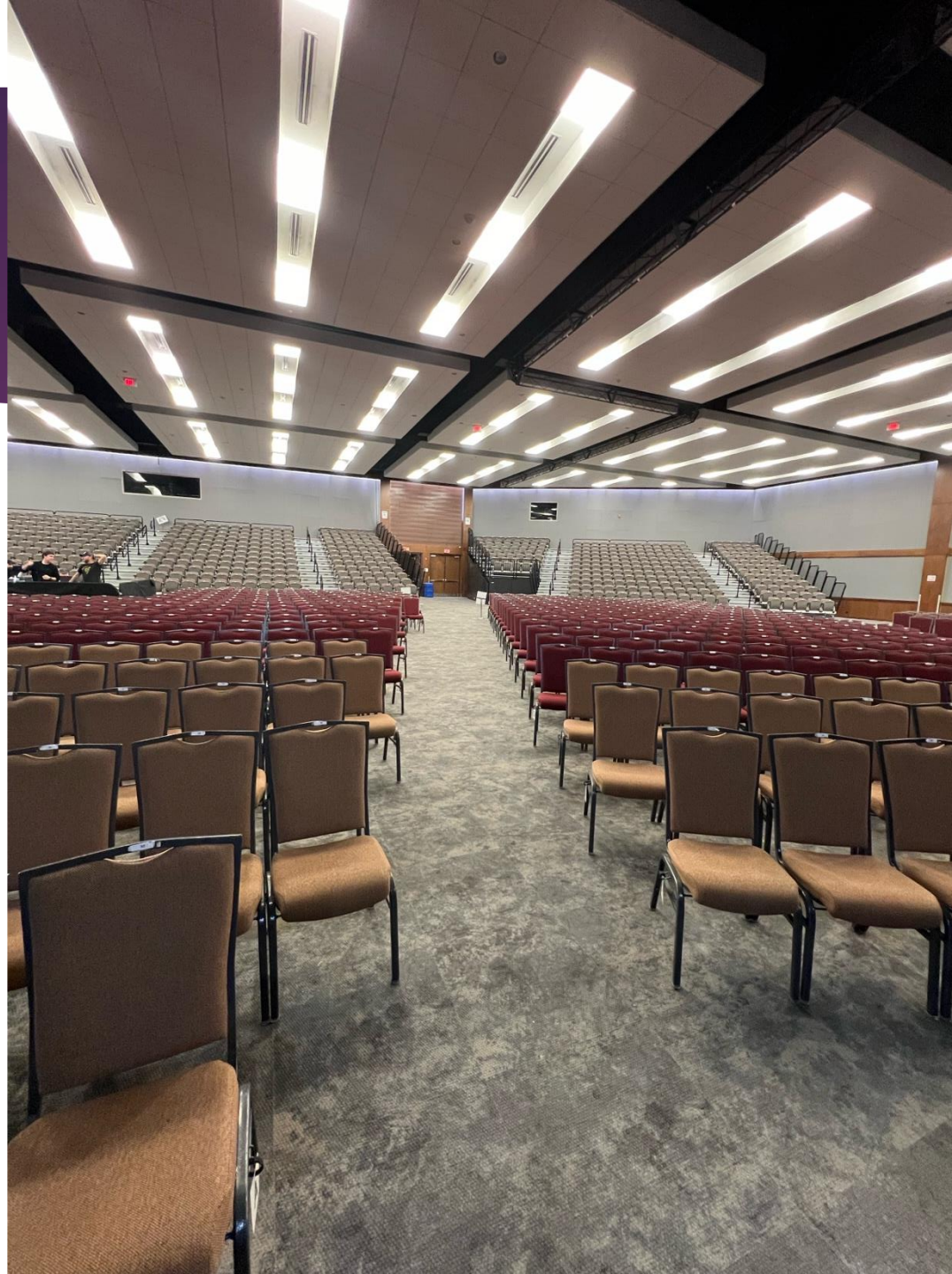
**PVA CHOIR
AND
ORCHESTRA
WILL BE ON THE
RIGHT SIDE OF
AUDITORIUM**

GRAD GROUP #9-#16

PROCESSIONAL



**GRAD GROUPS
#9-#16 ENTER
FROM THE LEFT
SIDE OF
AUDITORIUM**





**PVA BAND
WILL BE ON
THE LEFT
SIDE OF
AUDITORIUM**

Processional
Staff and Graduands

Central Memorial PVA String Orchestra

Pomp and Circumstance
by Edward Elgar

Master of Ceremonies
Veronica Massiah

Acknowledgement of the Land
Maya Nandagiri

**Greetings from
The Calgary Board of Education**
Nancy Close

Principal's Address
Principal Anne Kromm

**Introduction of Graduating Students
First Section: A-G**
Mr. Braden Griffiths

**Central Memorial PVA Choir & String
Orchestra**

Fly Away Home by Pinkzebra

**Introduction of Graduating Students
Second Section: H-O**

Ms. Jessica Nottell

Central Memorial PVA Band
City Trees by Michael Markowski

**Introduction of Graduating Students
Third Section: P-Z**

Ms. Jill Tuttle

Valedictory Address
Athena Cheng

Recessional
Staff and Graduands

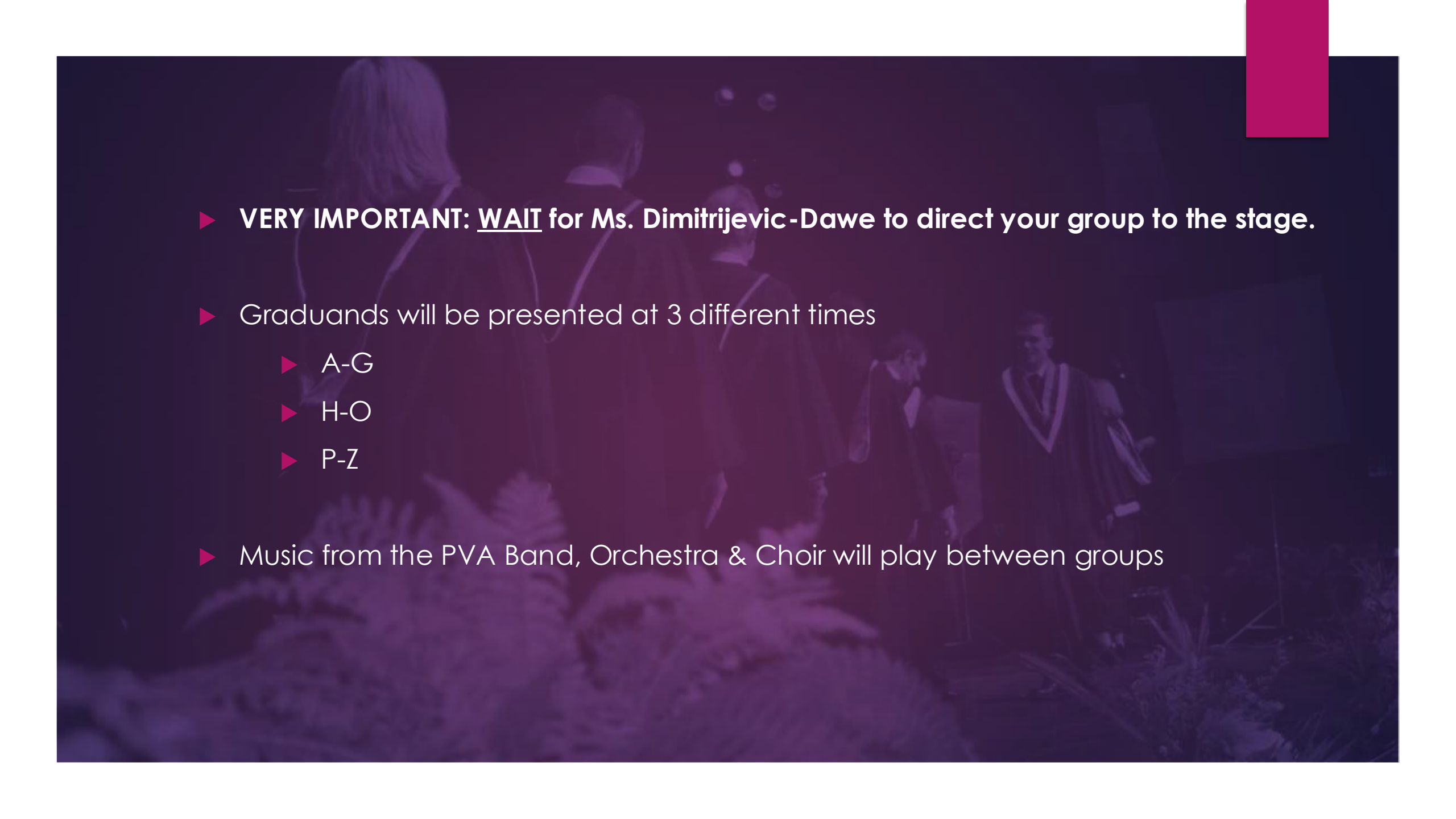
Central Memorial PVA Band
An Original Suite
by Gordon Jacob



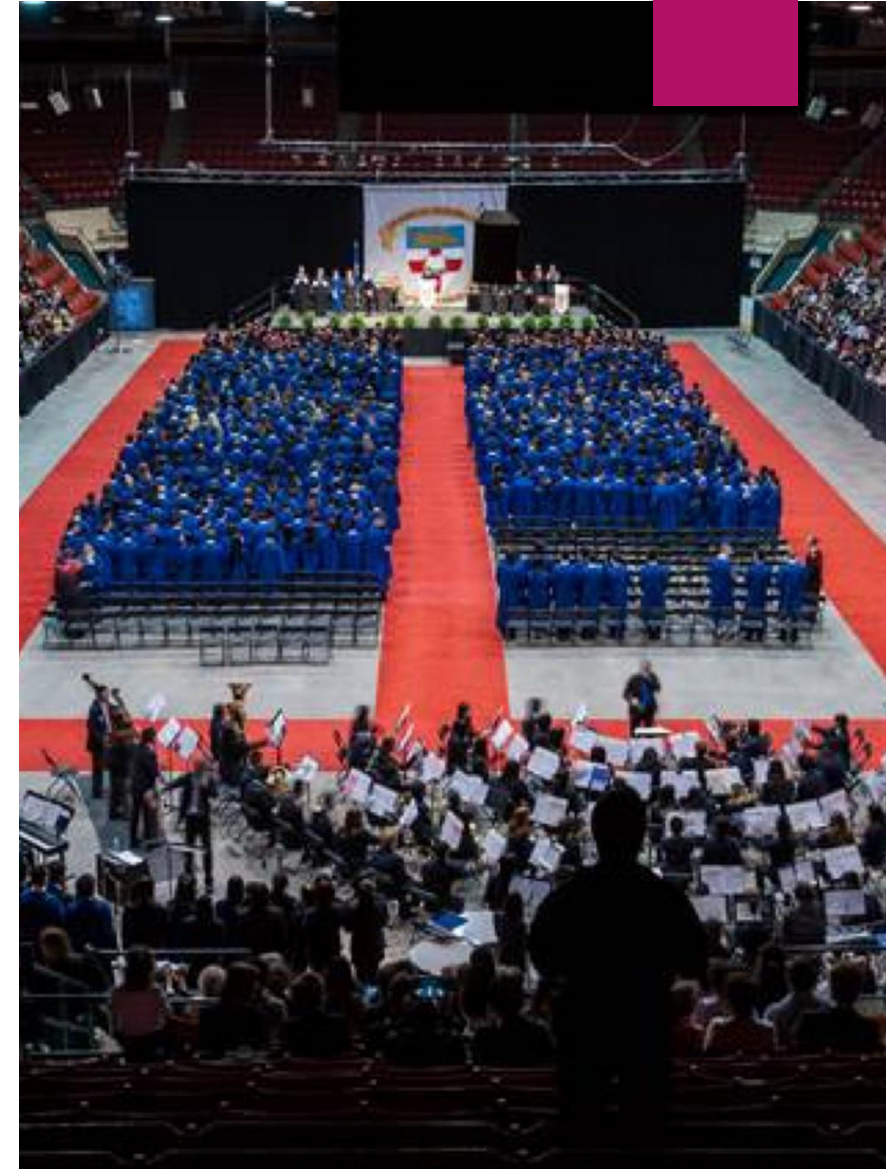
CROSSING THE STAGE

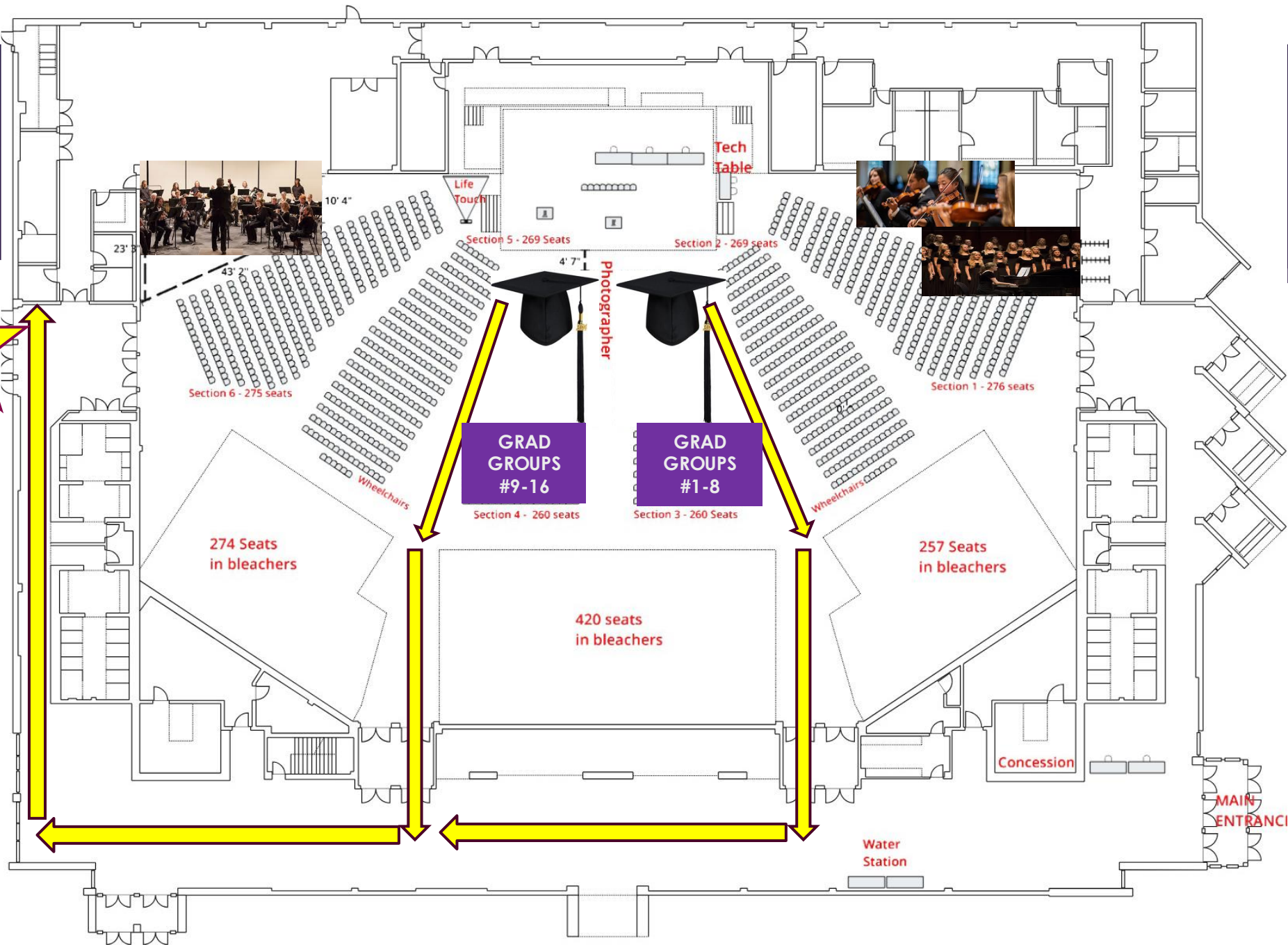
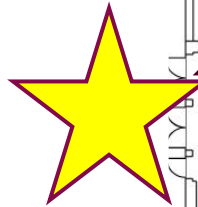
- ▶ Crossing the Stage
- ▶ **Ms. Dimitrijevic-Dawe** will direct your group to stand up and take you to line up for crossing the stage. Please continue to follow directions from **Ms. Martin-Asmus** and **Ms. Demers**.
- ▶ Walk towards **Ms. Day** to receive your certificate booklet & turn your booklet over to your name.
- ▶ Hand the teacher your certificate Book, WAIT for your name to be READ.
- ▶ Move across the stage and shake hands with party platform and administration.
- ▶ After crossing the stage, proceed to following directions from **Constable Courte & Ms. Kuemper, Ms. Green & Ms. Garland**. to return to your seat
- ▶ Please refrain from applause until ALL names have been read. This helps keep the flow going.



- 
- ▶ **VERY IMPORTANT: WAIT for Ms. Dimitrijevic-Dawe to direct your group to the stage.**
 - ▶ Graduates will be presented at 3 different times
 - ▶ A-G
 - ▶ H-O
 - ▶ P-Z
 - ▶ Music from the PVA Band, Orchestra & Choir will play between groups

- ▶ Following the Valedictorian address and closing remarks, teachers will lead students out of the auditorium for the Recessional.
- ▶ Groups #1-#8 will follow directions from **Ms.Dimitrijevic-Dawe**.
- ▶ Groups #9-#16 will follow directions from **Ms.Kuemper**.
- ▶ As you leave the auditorium, continue to follow the directions of the teachers out the **north doors** and proceed to the **east parking lot**, where you will meet with your family & guests.

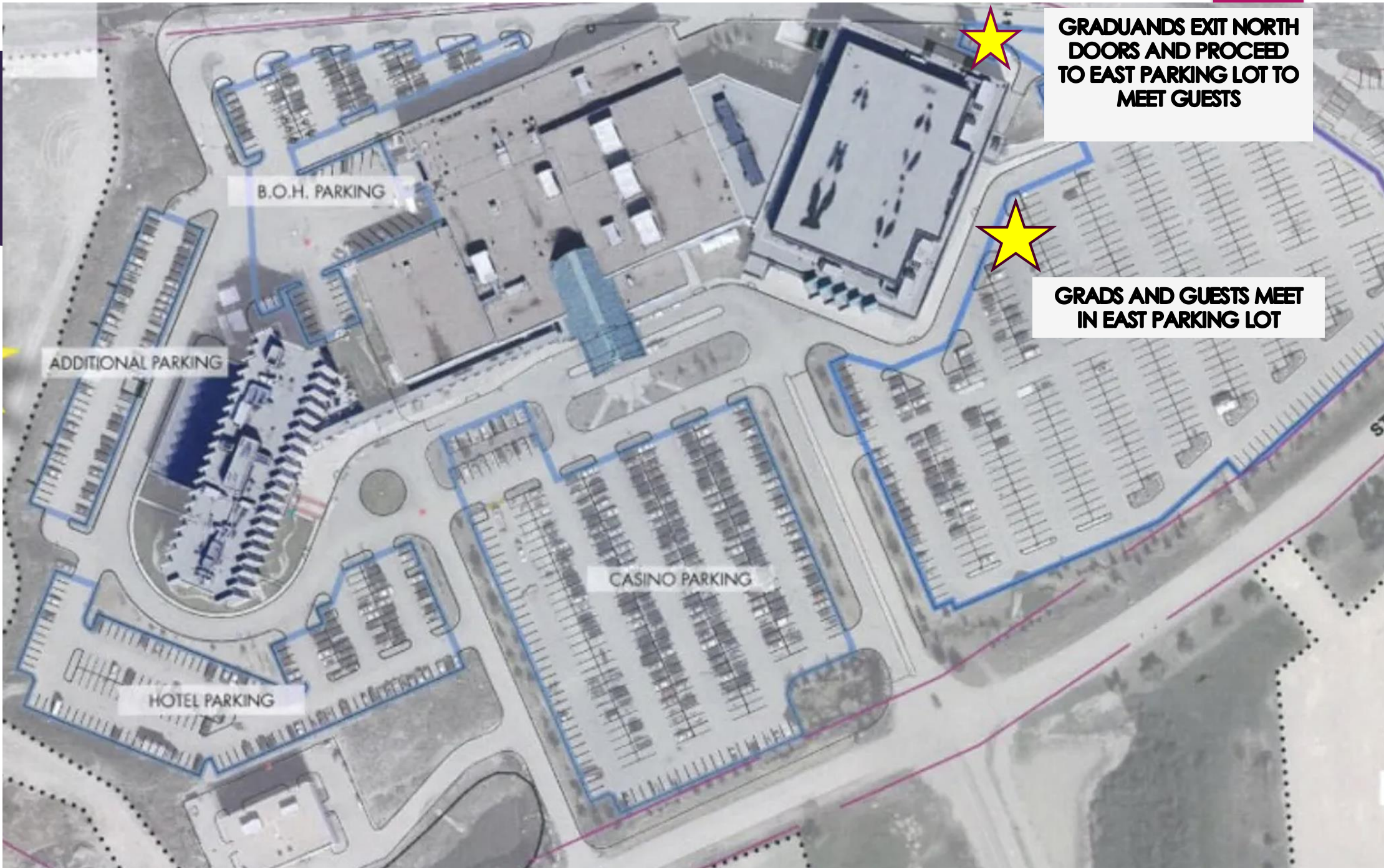




**GRADUANDS
EXIT NORTH
DOORS AND
PROCEED TO
EAST PARKING
LOT TO MEET
GUESTS**

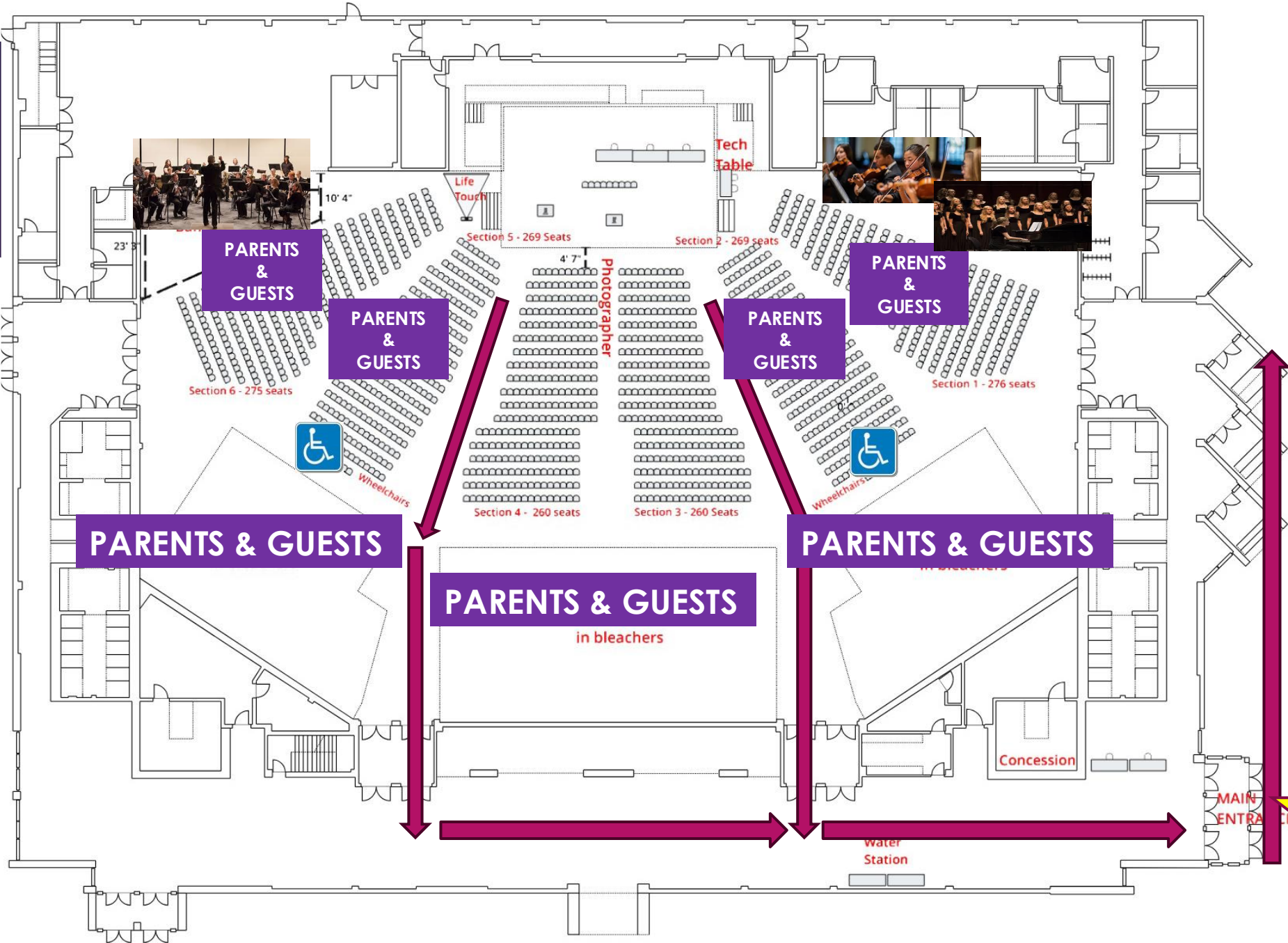


AFTER THE RECEPTIONAL
MEET YOUR FAMILY & GUEST IN EAST PARKING LOT



GRADUANDS EXIT NORTH DOORS AND PROCEED TO EAST PARKING LOT TO MEET GUESTS

GRADS AND GUESTS MEET IN EAST PARKING LOT



PARENTS & GUESTS

PARENTS & GUESTS

PARENTS & GUESTS

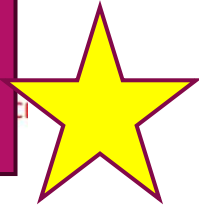
PARENTS & GUESTS
in bleachers

PARENTS & GUESTS

PARENTS & GUESTS

PARENTS & GUESTS

**FAMILY & GUESTS
EXIT SOUTH
DOORS AND
PROCEED TO
EAST PARKING
LOT TO
GRADUANDS**





AFTER THE RECESSIONAL
MEET YOUR GRADUANDS IN EAST PARKING LOT

**GUEST EXIT SOUTH
DOORS AND PROCEED
TO EAST PARKING LOT TO
MEET GRADUANDS**

**GRADS AND GUESTS MEET
IN EAST PARKING LOT**

B.O.H. PARKING

ADDITIONAL PARKING

CASINO PARKING

HOTEL PARKING

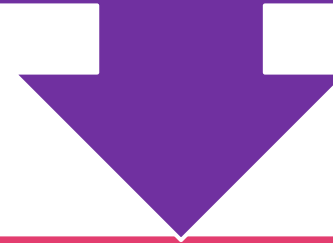


If the weather is nice,
take some outdoor
pictures with
family & friends 😊

ENJOY THE REST
OF YOUR DAY

EXPECTATIONS FOR CEREMONY

Graduation is an important and dignified occasion, which has significant meaning for all the graduating students, parents, families, and Central Memorial/CTC High School staff.



The ceremony signifies the successful culmination of many years of education and to ensure a graduation that is meaningful to all, the following is expected of all participants:

Graduates are to be courteous during the entire ceremony

Refrain from any activity that is disruptive, distracting, or malicious.

Please follow all directions as proposed by staff.



**FOR THOSE
ATTENDING
BANQUET
IN THE
EVENING**

BANQUET INFORMATION

WHERE: Grey Eagle
Event Centre

- same auditorium

WHEN: Thursday, June 4th

- 5:30 pm – Doors Open for Reception
- 11:00 pm – Event Concludes

BANQUET INFORMATION



5:30pm - Doors Open for Reception



6:00pm – Evening Program Begins



6:30pm - Buffet Service (food allergies get separate plated service/vouchers available from Ms. Dimitrijevic-Dawe)



7:30pm – Speeches & Toast



8:30pm - Dance Begins

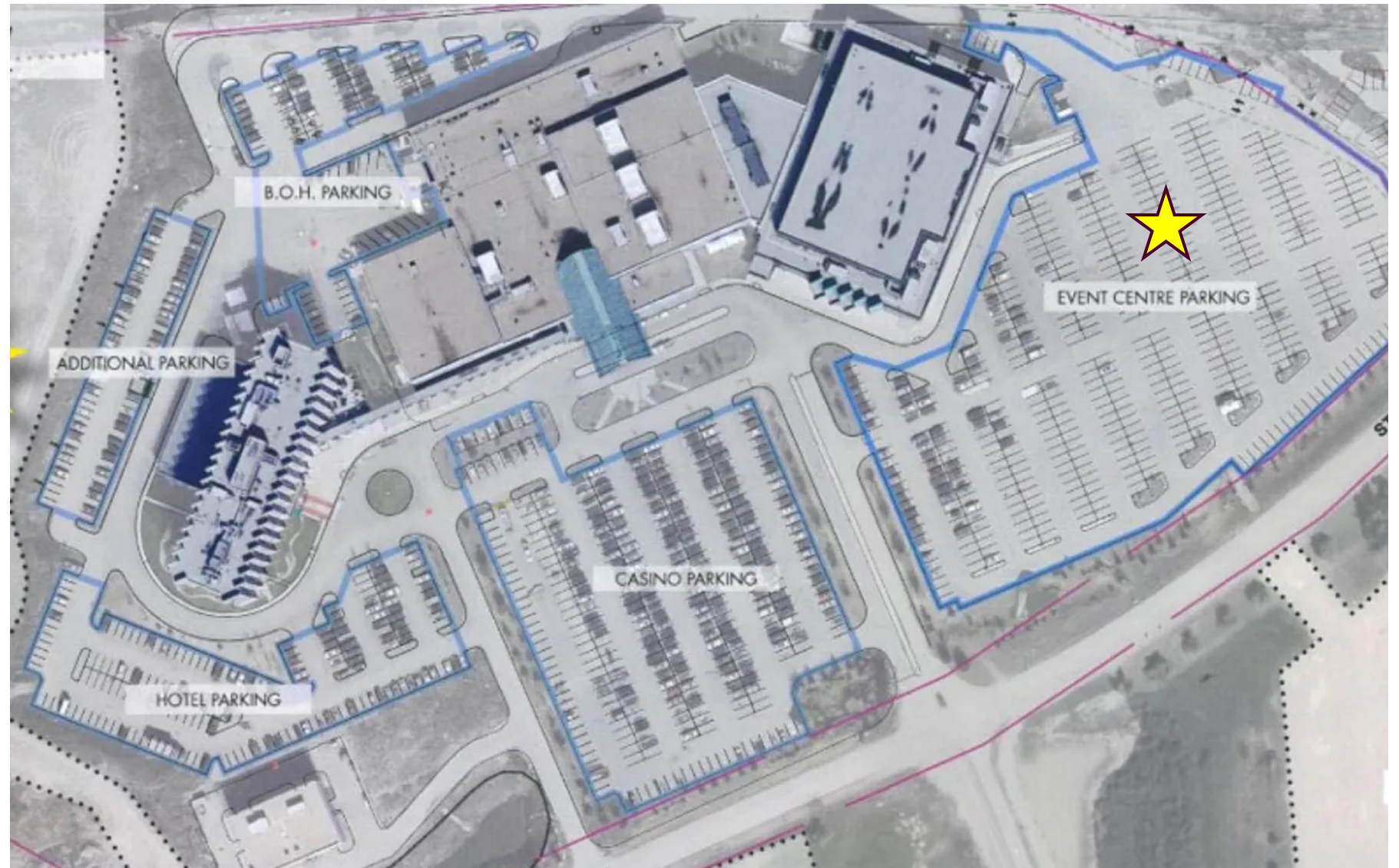


11:00pm - Event Concludes

ADDITIONAL BANQUET INFORMATION

Parking – Free and remember to park in the Event Centre parking lot (east lot).

Remember the designated drop off area, on the eastside of the Event Centre.





PLEASE DO NO DROP OFF
IN FRONT OF BOX OFFICE



PLEASE DO NOT DROP OFF
IN FRONT OF CASINO

A photograph of a large, dark grey building with the words "EVENT CENTRE" in white capital letters on its facade. The building is set against a clear blue sky. In the foreground, there is a large, flat area covered in snow, with several large mounds of snow piled up. To the left, a parking lot contains several cars. In the background, another building with a gabled roof is visible. The overall scene is a winter day in a parking area.

EVENT CENTRE

PLEASE DROP OFF ON EAST SIDE OF THE EVENT CENTRE

▶ THERE IS A
LARGE WIDE
SIDEWALK THAT
TAKES YOU RIGHT
TO THE FRONT
DOORS OF THE
EVENT CENTRE.

▶ LIMITED
MOBILITY &
WHEELCHAIR
ACCESSABLE



EXPECTATIONS FOR BANQUET

Please ensure you have your ticket receipt printed and available to show at the door.

Bags will be searched by Grey Eagle security at the banquet.

Any student OR guests who appears to be under the influence (and/or possession) of alcohol or of any controlled substance will not be permitted to the banquet. This is a non-alcohol event. No refunds will be issued.

In addition, smoking/vaping is not allowed at any time before, during, or after the ceremony and/or banquet.

No exit and/or re-entry will be allowed at the banquet for students.

Exit and/or re-entry will ONLY be allowed for parents at the banquet –but not during dinner service.

These are non-negotiable terms.

GOWN DISTRIBUTION

Wait until your group is called to go and pick up your gown.

Once you have received your gown, please exit the school via gymnasium doors.

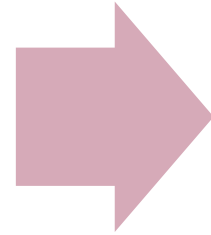
Be sure to keep your gown safe. There are no replacements if you lose any items.

You must have a clean gown to participate in Friday's Graduation Ceremony.

You get to keep all items in your gown package this year...you're welcome 😊

FINAL THOUGHTS...

WE WANT YOU TO
HAVE FUN



BUT MOST
IMPORTANTLY.....

- BE SMART
- BE SAFE
- BE SENSIBLE